



**PRODUCT RANGE**



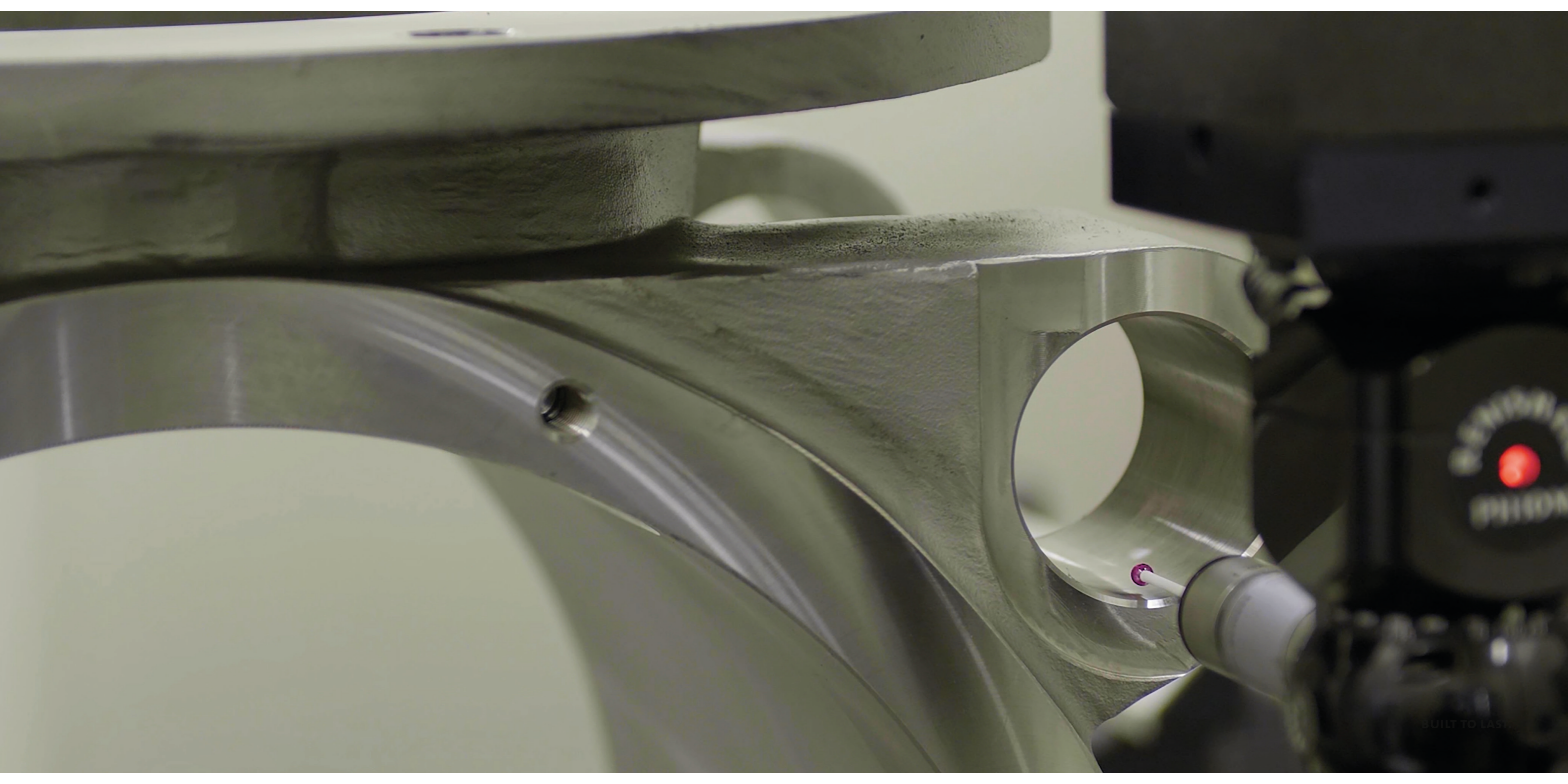
© Copyright 2020  
DMN WESTINGHOUSE  
The Netherlands  
Version 2020.06



The international world of processing comprises a large variety of industries and companies. DMN-WESTINGHOUSE has been designing and manufacturing rotary valves, diverter valves and other related components for the bulk solids handling industry for more than 40 years. As an independent company with no involvement in system design, our sole activity is to develop, manufacture and sell these components.

## CONTENTS

<b>ROTARY VALVES</b>	<b>4</b>
Airlock AL / AXL	6
Airlock AML	8
Airlock USAL	10
Blowing Seal BL / BXL / BXXL	12
Medium Duty Airlock MLD	14
Medium Duty Airlock MALD	16
Sanitary Airlock SAL	18
Granular Airlock GL	20
Dust Lock DL	22
Dairy Execution rotary valves AL-AXL MZC & BL-BXL MZC	24
<b>ROTARY VALVE TABLES</b>	<b>26</b>
<b>ROTOR OPTIONS</b>	<b>28</b>
<b>MATERIALS OF CONSTRUCTION</b>	<b>32</b>
<b>ACCESSORIES</b>	<b>34</b>
<b>DIVERTER VALVES</b>	<b>38</b>
Dual Pipe Plug Diverter PTD-II	40
Single Pipe Plug Diverter SPTD	42
Single Pipe Plug Diverter SPTDS	44
2-Port Tube Diverter 2-TDV	46
3-Port Tube Diverter 3-TDV	48
Multiport Tube Diverter M-TDV	50
Gravity Plug Diverter GPD	52
Flap Type Diverter FDV	54
Ball Type Diverter BTD	56
<b>OTHERS</b>	<b>58</b>
<b>INDUSTRIES</b>	<b>62</b>
<b>CONTACT</b>	<b>64</b>
<b>LEGISLATION</b>	<b>66</b>



BUILT TO LAST



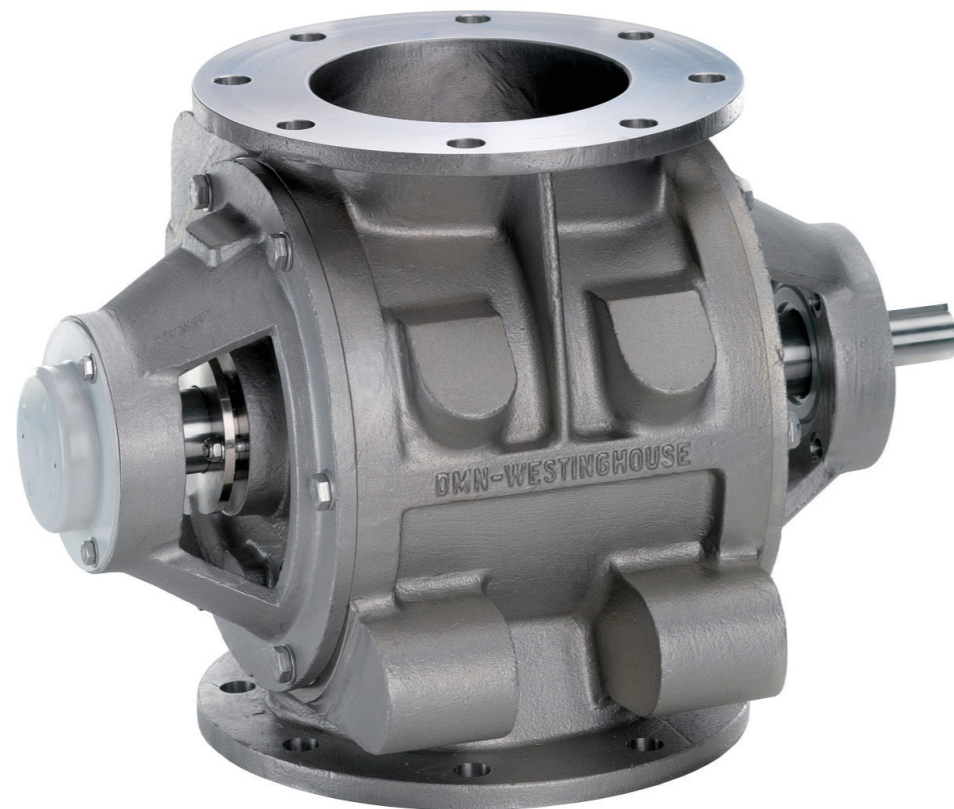
# ROTARY VALVES

Our rotary valves and diverters have a well-established reputation for being able to handle powders and granular products from all industries, such as dairy, food, pharma, plastics and chemicals. We can supply cast iron, sp-aluminium and stainless steel valves with variations of build, depending on the materials being handled. For abrasive products we can offer different coatings depending on the nature of the materials, such as Hardox replaceable blades, Hard Chrome and Tungsten Carbide. For sanitary applications we have our original rail rotary valve, the “MZC”, to allow easy removal of the rotor for cleaning purposes. EHEDG certification for CIP (Clean In Place) is also available. The valves can be polished internally and have full USDA / FDA approvals.

# AIRLOCK – AL / AXL



ROTARY VALVE - HIGH DUTY (OUTBOARD BEARING)



## AL / AXL

<b>PRESSURE</b>	Up to 2 bar
<b>PRESSURE SHOCK RESISTANT</b>	Up to 10 bar
<b>PRODUCT TEMP °C</b>	Up to +150° (optional up to +600° depending on material of construction)
<b>AMBIENT TEMP °C</b>	-20° up to +40°
<b>STANDARD / EASILY DETACHABLE</b>	Yes
<b>RID CONTROL</b>	Yes
<b>ROTOR</b>	Adjustable blades / Fixed vanes
<b>ADJUSTABLE BLADES</b>	Steel / Steel hardened / Stainless steel / Polyurethane
<b>SEAL</b>	Gland / Air purge by means of: Packing cord / Lip seal
<b>DRIVE</b>	Chain / Direct drive: Helical gear unit - Parallel shaft helical gear unit
<b>ATEX 2014/34/3U</b>	1D/2GD Equipment / Protective system st.2 (10 bar p <sub>max</sub> )

## AL

## AXL

<b>MZC</b>	Cast iron / Stainless steel only	Yes
<b>MATERIAL OF CONSTRUCTION</b>	Cast iron Stainless steel 316 Aluminium Ni-hard	Stainless steel 316
<b>COATING</b>	Chrome or Nickel plating Tungsten carbide Hard anodising	On request
<b>FLANGE HOLE PATTERN</b>	DIN PN10 / ANSI 150 (AL 100 DIN PN6)	DIN PN10 / ANSI 150

*The AXL valves have enlarged inlets, which are specifically designed for products with poor flowability.*

<b>SIZE TYPE AL</b>	100	150	175	200	250	300	350	400	450	500
<b>SIZE TYPE AXL</b>			200	250	300	350				
<b>LTR/REV AT 100% FILLING</b>	0,8	2,5	5,5	10,5	19	34	58	91	135	230

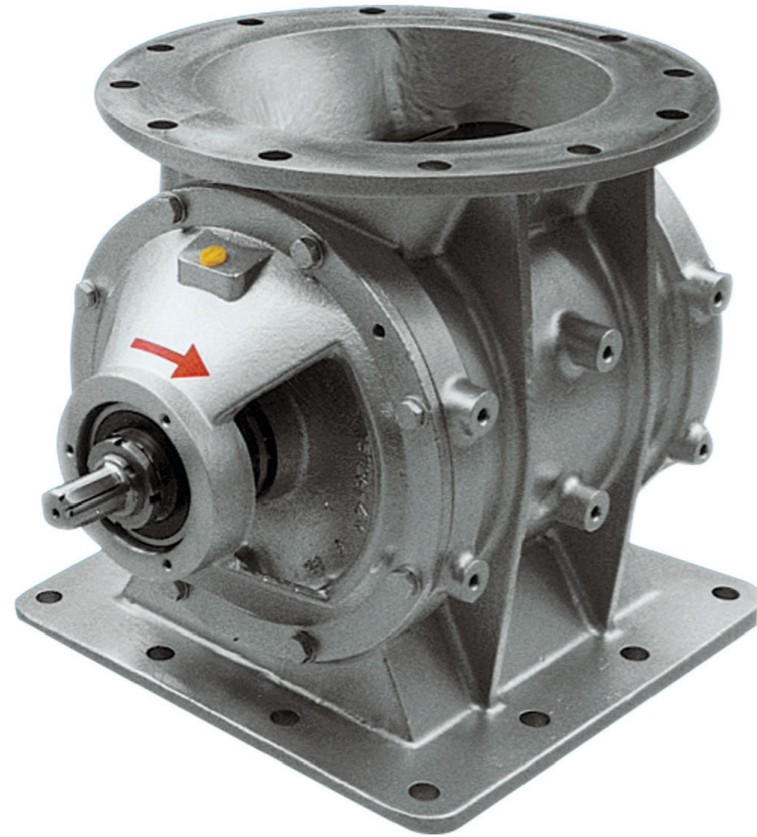
AL/AXL

BUILT TO LAST.

# AIRLOCK – AML



ROTARY VALVE - HIGH DUTY (OUTBOARD BEARING)



## AML

<b>PRESSURE</b>	Up to 2 bar
<b>PRESSURE SHOCK RESISTANT</b>	Up to 10 bar
<b>PRODUCT TEMP °C</b>	Up to +150° (optional up to +600° depending on material of construction)
<b>AMBIENT TEMP °C</b>	-20° up to 40°
<b>STANDARD / EASILY DETACHABLE</b>	Yes
<b>MZC</b>	Stainless steel only
<b>RID CONTROL</b>	Yes
<b>MATERIAL OF CONSTRUCTION</b>	Cast iron
<b>COATING</b>	Stainless steel 316 Chrome or Nickel plating Tungsten carbide
<b>FLANGE HOLE PATTERN</b>	Round: DIN PN10 / ANSI 150    Square: upon drawing (AML 100 DIN PN6)
<b>ROTOR</b>	Adjustable blades / Fixed vanes
<b>ADJUSTABLE BLADES</b>	Steel / Steel hardened / Stainless steel / Polyurethane
<b>SEAL</b>	Gland / Air purge by means of: Packing cord / Lip seal
<b>DRIVE</b>	Chain / Direct drive: Helical gear unit - Parallel shaft helical gear unit
<b>ATEX 2014/34/3U</b>	1D/2GD Equipment / Protective system st.2 (10 bar p <sub>max</sub> )

<b>SIZE TYPE AML</b>	100	150	200	250	300	350	400
<b>LTR/REV AT 100% FILLING</b>	0,8	2,5	5,5	10,5	19	34	58

AML

BUILT TO LAST.

# AIRLOCK – USAL

ROTARY VALVE - HIGH DUTY (OUTBOARD BEARING)



## USAL

<b>PRESSURE</b>	Up to 2 bar
<b>PRESSURE SHOCK RESISTANT</b>	Up to 10 bar
<b>PRODUCT TEMP °C</b>	Up to +150° (optional up to +400° depending on material of construction)
<b>AMBIENT TEMP °C</b>	-20° up to +40°
<b>STANDARD / EASILY DETACHABLE</b>	Yes
<b>MZC</b>	No
<b>RID CONTROL</b>	No
<b>MATERIAL OF CONSTRUCTION</b>	Cast iron
<b>COATING</b>	Chrome or Nickel plating Tungsten carbide
<b>FLANGE HOLE PATTERN</b>	Square: upon drawing
<b>ROTOR</b>	Adjustable blades / Fixed vanes
<b>ADJUSTABLE BLADES</b>	Steel / Steel hardened / Stainless steel / Polyurethane
<b>SEAL</b>	Gland / Air purge by means of: Packing cord / Lip seal
<b>DRIVE</b>	Chain / Direct drive: Helical gear unit - Parallel shaft helical gear unit

<b>SIZE TYPE USAL</b>	203,2 (8")	254 (10")	304,8 (12")
<b>LTR/REV AT 100% FILLING</b>	5,5	10,5	19

USAL

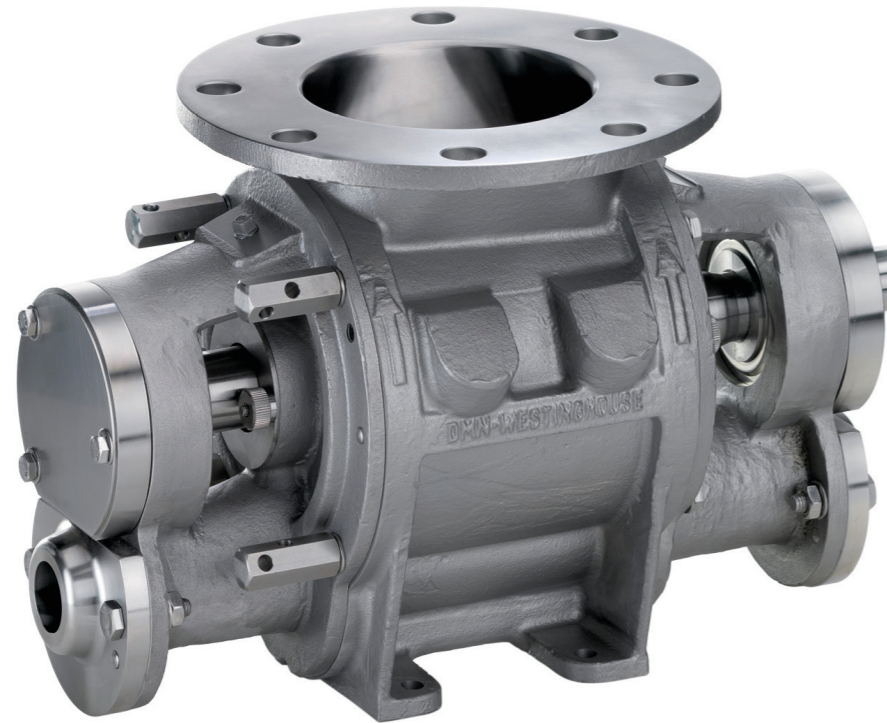
BUILT TO LAST.



# BLOWING SEAL - BL / BXL / BXXL



ROTARY VALVE - HIGH DUTY (OUTBOARD BEARING)



## BL / BXL / BXXL

<b>PRESSURE</b>	Up to 2 bar
<b>PRESSURE SHOCK RESISTANT</b>	Up to 10 bar
<b>PRODUCT TEMP °C</b>	Up to +150° (optional up to +250°)
<b>AMBIENT TEMP °C</b>	-20° up to +40°
<b>FLANGE DRILLED TO</b>	DIN PN10 / ANSI 150
<b>STANDARD / EASILY DETACHABLE</b>	Yes
<b>RID CONTROL</b>	Yes
<b>ROTOR</b>	Ajustable blades / Fixed vanes
<b>ADJUSTABLE BLADES</b>	Steel / Steel hardened / Stainless steel / Polyurethane
<b>SEAL</b>	Gland / Air purge by means of: Packing cord / Lip seal
<b>DRIVE</b>	Chain / Direct drive: Helical gear unit - Parallel shaft helical gear unit
<b>ATEX 2014/34/3U</b>	1D/2GD Equipment / Protective system st.2 (10 bar p <sub>max</sub> )

## BL

## BXL

## BXXL

<b>MATERIAL OF CONSTRUCTION</b>	Cast iron Stainless steel 316	Stainless steel 316 Aluminium	Stainless steel 316
<b>COATING</b>	Chrome or Nickel plating Tungsten carbide layer	Hard anodising	On request
<b>MZC</b>	Stainless steel only	Yes	Yes

*The BXL and BXXL valves have enlarged inlets, which are specifically designed for products with poor flowability.*

<b>SIZE TYPE BL</b>	150	175	200	250	300	350
<b>SIZE TYPE BXL</b>		200	250	300	350	
<b>SIZE TYPE BXXL</b>				350		
<b>LTR/REV AT 100% FILLING</b>	2,5	5,5	10,5	19	34	58

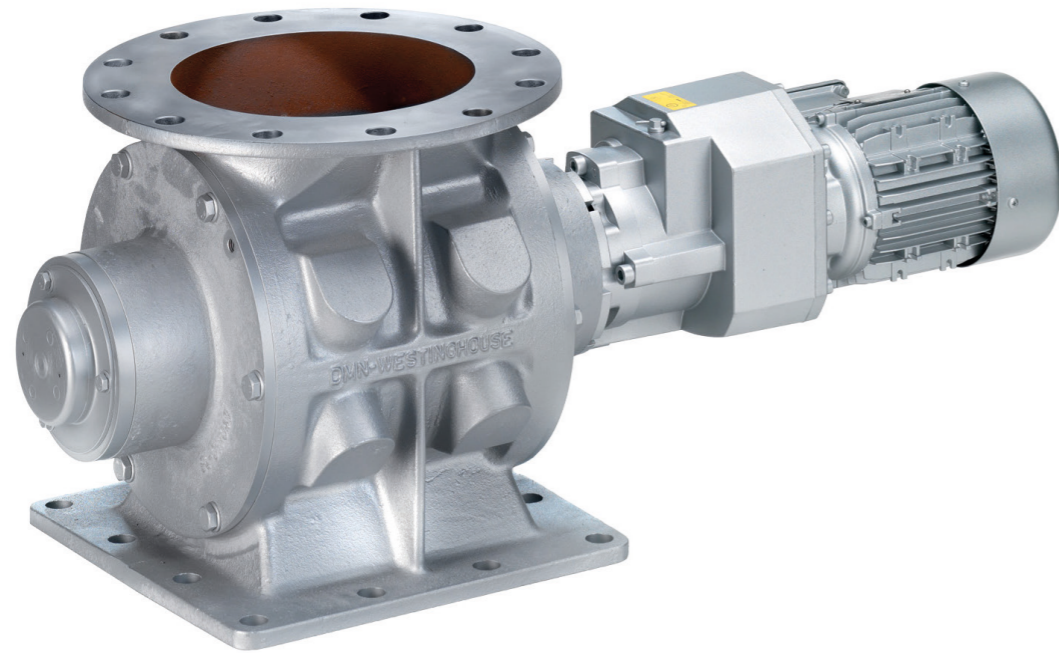
BL / BXL / BXXL

BUILT TO LAST.

# MEDIUM DUTY AIRLOCK - MLD



ROTARY VALVE - MEDIUM DUTY (INBOARD BEARING)



## MLD

<b>PRESSURE</b>	Up to 1 bar
<b>PRESSURE SHOCK RESISTANT</b>	Up to 10 bar
<b>PRODUCT TEMP °C</b>	Up to +65°
<b>AMBIENT TEMP °C</b>	-20° up to +40°
<b>MATERIAL OF CONSTRUCTION</b>	Cast iron Stainless steel 316
<b>COATING</b>	Chrome or Nickel plating Tungsten carbide layer
<b>FLANGE HOLE PATTERN</b>	Round: DIN PN10 / ANSI 150 Square: upon drawing (MLD 100 DIN PN6)
<b>ROTOR</b>	Adjustable blades / Fixed vanes
<b>ADJUSTABLE BLADES</b>	Steel / Steel hardened / Stainless steel / Polyurethane
<b>SEAL</b>	Gland / Air purge by means of: Lip seal
<b>DRIVE</b>	Direct drive Helical gear unit
<b>ATEX 2014/34/3U</b>	1D/2GD Equipment

<b>SIZE TYPE MLD</b>	100	150	200	250	300	350	400
<b>LTR/REV AT 100% FILLING</b>	0,8	2,5	5,5	10,5	19	34	58

MLD

BUILT TO LAST.

# MEDIUM DUTY AIRLOCK - MALD



ROTARY VALVE - MEDIUM DUTY (INBOARD BEARING)



## MALD

<b>PRESSURE</b>	Up to 1 bar
<b>PRESSURE SHOCK RESISTANT</b>	Up to 10 bar
<b>PRODUCT TEMP °C</b>	Up to +65°
<b>AMBIENT TEMP °C</b>	-20° up to +40°
<b>MATERIAL OF CONSTRUCTION</b>	Cast iron Stainless steel 316 Aluminium
<b>COATING</b>	Chrome or Nickel plating Tungsten carbide layer Hard anodising
<b>FLANGE HOLE PATTERN</b>	Round: DIN PN10 / ANSI 150
<b>ROTOR</b>	Adjustable blades / Fixed vanes
<b>ADJUSTABLE BLADES</b>	Steel / Steel hardened / Stainless steel / Polyurethane
<b>SEAL</b>	Gland / Air purge by means of: Lip seal
<b>DRIVE</b>	Direct drive Helical gear unit
<b>ATEX 2014/34/3U</b>	1D/2GD Equipment

<b>SIZE TYPE MALD</b>	100	150	175	200	250	300	350
<b>LTR/REV AT 100% FILLING</b>	0,8	2,5	5,5	10,5	19	34	58

MALD

BUILT TO LAST.

# SANITARY AIRLOCK - SAL



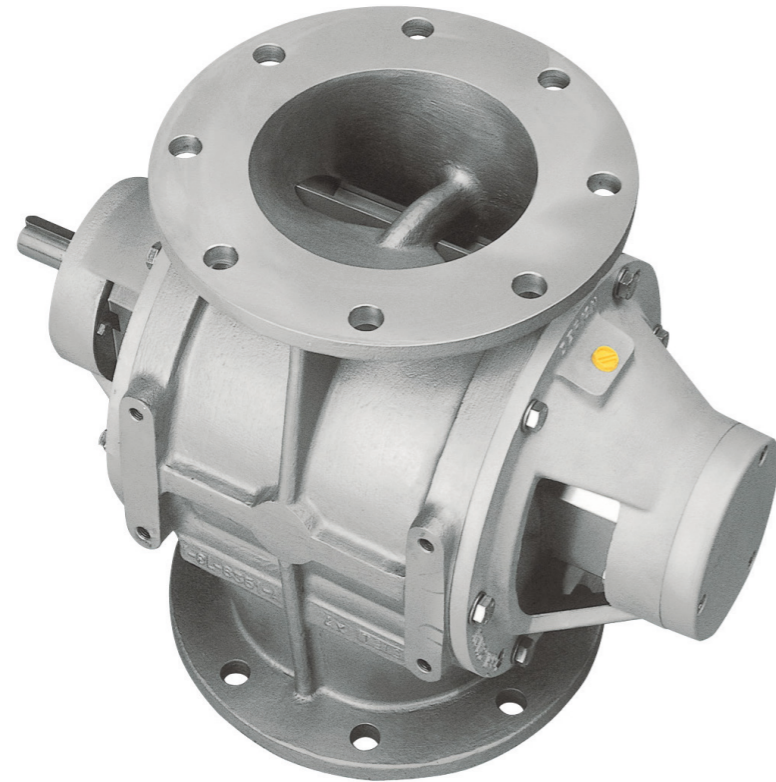
## SAL

<b>PRESSURE</b>	Up to 1 bar
<b>PRODUCT TEMP °C</b>	Up to +100°
<b>AMBIENT TEMP °C</b>	-20° up to +40°
<b>MATERIAL OF CONSTRUCTION</b>	Stainless steel 316L Polished Ra 0.8 (150 grit)
<b>COATING</b>	No
<b>FLANGE HOLE PATTERN</b>	Ferrule (Size 150: DIN PN6)
<b>ADJUSTABLE BLADES</b>	N.A.
<b>SEAL</b>	Gland / Air purge by means of: Lip seal
<b>DRIVE</b>	Direct drive Worm gear unit
<b>ATEX 2014/34/EU</b>	1D/2GD Equipment

<b>SIZE TYPE SAL</b>	50	65	80	100	150
<b>LTR/REV AT 100% FILLING</b>	0,07	0,13	0,25	0,8	2,5



# GRANULAR AIRLOCK - GL



## GL

<b>PRESSURE</b>	Up to 1,5 bar
<b>PRODUCT TEMP °C</b>	Up to +150° (optional up to +250° depending on material of construction)
<b>AMBIENT TEMP °C</b>	-20° up to +40°
<b>MATERIAL OF CONSTRUCTION</b>	Stainless steel 316 Aluminium
<b>COATING</b>	Hard anodising
<b>FLANGE HOLE PATTERN</b>	DIN PN10 / ANSI 150
<b>ROTOR</b>	Fixed vane end disc stainless steel 316L
<b>SEAL</b>	Gland by means of packing cord
<b>DRIVE</b>	Chain / Direct drive: Helical gear unit - Parallel shaft helical gear unit
<b>ATEX 2014/34/EU</b>	1D/2GD Equipment

<b>SIZE TYPE GL</b>	150	200	250	300	350
<b>LTR/REV AT 100% FILLING</b>	5	10	17,5	32	79

GRANULAR ROTARY VALVE

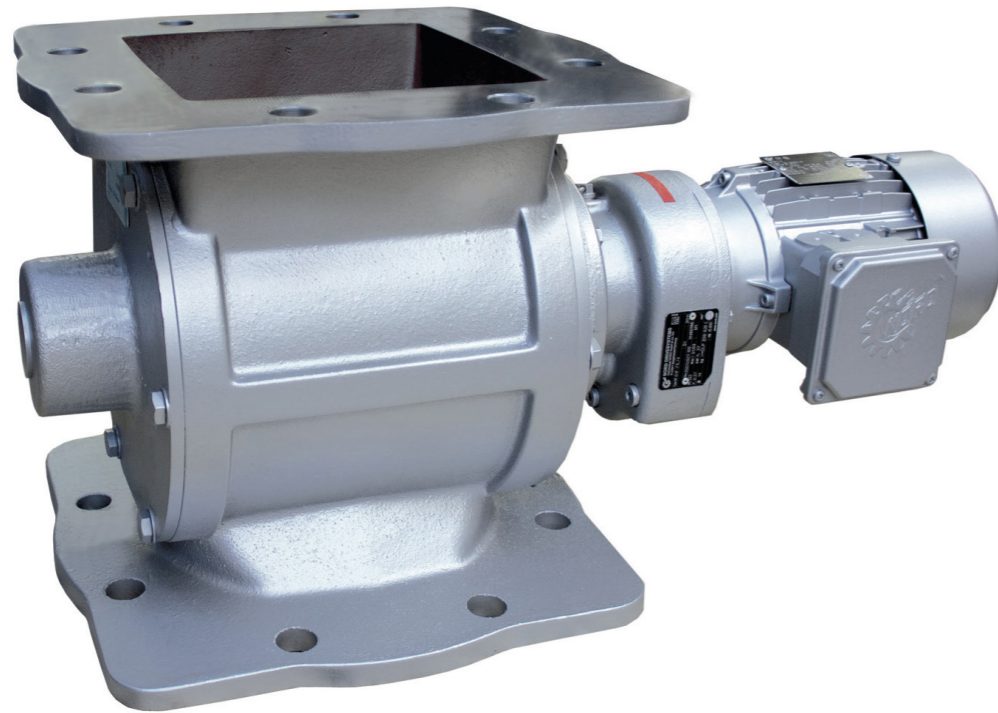
GL

BUILT TO LAST.

# DUST LOCK - DL



DUST FILTER ROTARY VALVE



## DL

<b>PRESSURE</b>	Up to 0,5 bar
<b>PRODUCT TEMP °C</b>	Up to +70°
<b>AMBIENT TEMP °C</b>	-20° up to +40°
<b>MATERIAL OF CONSTRUCTION</b>	Cast Iron
<b>FLANGE HOLE PATTERN</b>	Universal flange connection to either Round or Square connection drilled to DIN PN10
<b>ROTOR</b>	Adjustable blades / Fixed vanes
<b>ADJUSTABLE BLADES</b>	Polyurethane
<b>SEAL</b>	Gland by means of Lip seal
<b>DRIVE</b>	Direct drive: Helical gear unit

## EXECUTION 1

## EXECUTION 1EX

<b>ATEX 2014/34/EU</b>	1D/2GD Equipment	1D/2GD Equipment / Protective system St.2 Steel blades (3 bar p <sub>max</sub> ) Polyurethane blades (2 bar p <sub>max</sub> )
------------------------	------------------	--

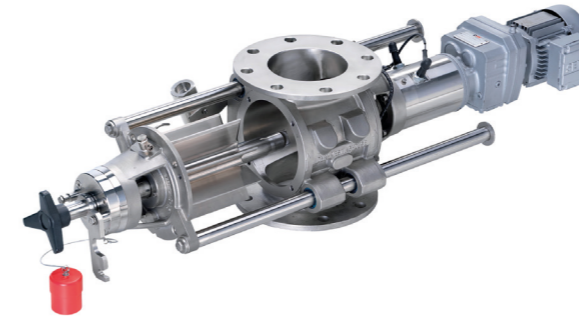
<b>SIZE TYPE DL</b>	200	250	300
<b>LTR/REV AT 100% FILLING</b>	6	8,5	19

DL

BUILT TO LAST.

# DAIRY EXECUTION ROTARY VALVES

The MZC rotary valves have been widely used in sanitary applications (Dairy execution) as well as many other applications. The unit has an easy Removeable rotor which can be removed within a few minutes to facilitate inspection and cleaning. The configuration with direct drive has a very narrow construction. The direct drive, in conjunction with a frequency inverter, results in a very flexible, safe and maintenance free unit (no chains or grease). The extraction mechanism offers a high degree of operator safety and gives the line operators considerable flexibility in cleaning and maintaining the equipment between runs. Moreover the stability of the extraction mechanism ensures that the rotor can be easily moved in and out of the housing without damaging the housing or the rotor blades.



## AL-AXL MZC airlock with side rails

- Supporting bars for easy removal of rotor and end cover
- Direct drive or chain drive
- Narrow, fl exible and maintenance free construction with direct drive
- Hygienic, USDA Dairy Accepted versions available
- Increased safety at work
- Explosion shock resistant up to 10 bar g
- Flameproof versions for both St1 and St2 products available
- Versions conforming to EC 1935/2004 available
- Versions conforming to ATEX 2014/34/EU available



## BL-BXL MZC blowing seal with side rails

- Supporting bars for easy removal of rotor and end cover
- Direct drive or chain drive
- Narrow, fl exible and maintenance free construction with direct drive
- Hygienic, USDA Dairy Accepted versions
- Versions conforming to EC 1935/2004 available
- Increased safety at work
- Special blow through versions for cyclone or spray drier applications
- Explosion shock resistant up to 10 bar g
- Flameproof versions for both St1 and St2 products available
- Versions conforming to ATEX 2014/34/EU available

# ROTARY VALVE TABLES

## FILLING CAPACITY\* VERSUS SIZE

MM/INCH"	50 / 2"	65 / 2.5"	80 / 3"	100 / 4"	150 / 6"	175 / 7"	200 / 8"	250 / 10"	300 / 12"	350 / 14"	400 / 16"	450 / 18"	500 / 20"
<b>AL-BL</b>				0.8 / 0.28	2.5 / 0.8	5.5 / .19	10.5 / .37	19 / .67	34 / 1.2	58 / 2.05	91 / 3.21	135 / 4.77	230 / 8.12
<b>AML</b>				0.8 / 0.28	2.5 / 0.8		5.5 / .19	10.5 / .37	19 / .67	34 / 1.2	58 / 2.05		
<b>AXL-BXL</b>							5.5 / .19	10.5 / .37	19 / .67	34 / 1.2			
<b>BXXL</b>										19 / .67			
<b>SAL</b>	0.07 / .002	0.13 / .005	0.25 / .009	0.8 / 0.28	2.5 / 0.8								
<b>MLD</b>				0.8 / 0.28	2.5 / 0.8		5.5 / .19	10.5 / .37	19 / .67	34 / 1.2	58 / 2.05		
<b>MALD</b>					2.5 / 0.8	5.5 / .19	10.5 / .37	19 / .67	34 / 1.2	58 / 2.05			
<b>DL</b>							6 / .21	8.5 / .3	19 / .67				

LTR./FT³

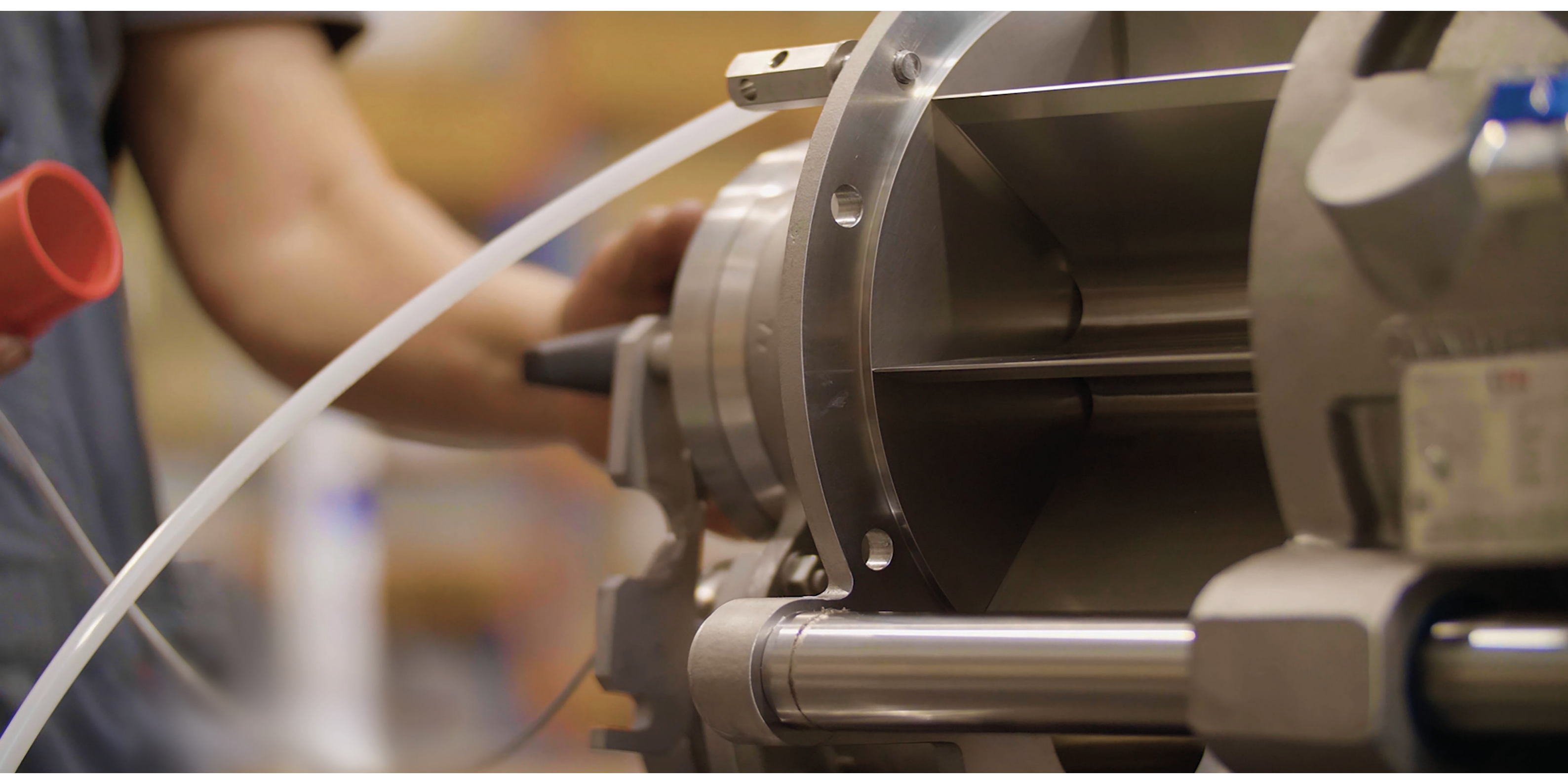
\* BASED ON LITRE / FT³ PER REVOLUTION AT 100% FILLING

## SIZE VERSUS FILLING CAPACITY\*

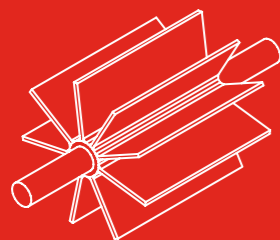
LTR./FT³	.07 / .002	.13 / .005	.25 / .009	.8 / .028	2.5 / .08	5.5 / .19	6 / .21	8.5 / .30	10.5 / .37	19 / .67	34 / 1.2	58 / 2.5	91 / 3.21	135 / 4.77	230 / 8.12
<b>AL-BL</b>				100 / 4"	150 / 6"	175 / 7"			200 / 8"	250 / 10"	250 / 10"	250 / 10"	400 / 16"	450 / 18"	500 / 20"
<b>AML</b>				100 / 4"	150 / 6"	200 / 8"			250 / 10"	300 / 12"	250 / 10"	400 / 16"			
<b>AXL-BXL</b>						200 / 8"			250 / 10"	300 / 12"	250 / 10"				
<b>BXXL</b>										350 / 14"					
<b>SAL</b>	50 / 2"	65 / 2.5"	80 / 3"	100 / 4"	150 / 6"										
<b>MLD</b>				100 / 4"	150 / 6"	200 / 8"			250 / 10"	300 / 12"	350 / 14"	400 / 16"			
<b>MALD</b>					150 / 6"	175 / 7"			200 / 8"	250 / 10"	300 / 12"	350 / 14"			
<b>DL</b>							200 / 8"	250 / 10"		300 / 12"					

MM/INCH"





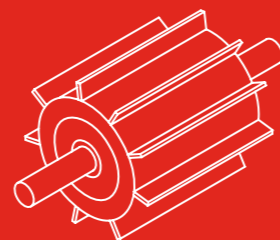
# ROTOR OPTIONS



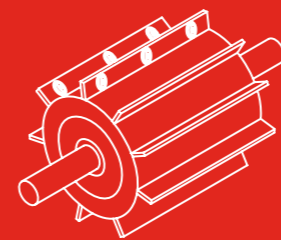
**FIXED BLADES**



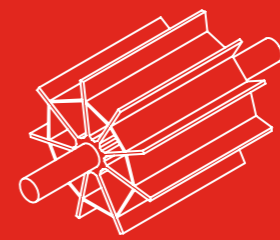
**REPLACEABLE AND  
ADJUSTABLE BLADES**



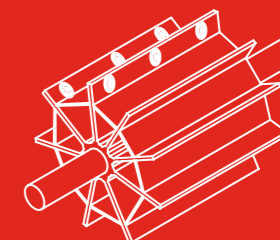
**REDUCED CAPACITY  
FIXED BLADES**



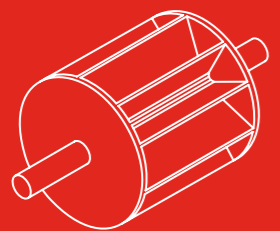
**REDUCED CAPACITY REPLACEABLE  
AND ADJUSTABLE BLADES**



**REDUCED CAPACITY  
OPEN END FIXED BLADES**



**RC OPEN END REPLACEABLE  
AND ADJUSTABLE BLADES**



**END DISC FIXED BLADES**



**END-DISC REPLACEABLE  
AND ADJUSTABLE BLADES**



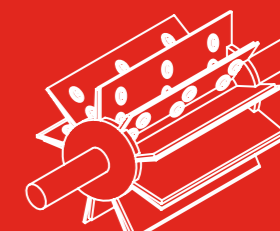
**SCALLOPED**



**FINE DOSING**



**SCALLOPED OPEN END**



**SEMI END-DISC REPLACEABLE  
AND ADJUSTABLE BLADES**



# MATERIALS OF CONSTRUCTION

## PRODUCT GROUP

AL-AXL-AML-BL-BXL-BXXL-MLD-MALD

## ADDITIONAL

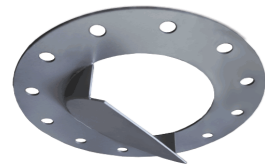
EXECUTION	BODY-END COVERS	ROTOR	ADJUSTABLE BLADES	SHAFT SEAL
<b>1</b>	Cast iron	Mild steel	Mild steel	Gland - Rameh
<b>2</b>	Stainless steel 316	Stainless steel 316L	Stainless steel 316L	Gland - Teadit
<b>3C</b>	Cast Iron Completely Chromium plated	Stainless steel 316L	Stainless steel 316L	Gland - Teadit
<b>3N</b>	Cast Iron Completely Nickel plated	Stainless steel 316L	Stainless steel 316L	Gland - Teadit
<b>4C</b>	Cast Iron Bore + end covers Internally Chromium plated	Mild steel with Chromium plated shafts	Hardened steel (Hardox)	Air purge gland - Rameh
<b>4TCO</b>	Cast Iron Bore + end covers Internally Tungsten Carbide coated	Mild steel with Tungsten Carbide coated shafts	Hardened steel (Hardox)	Air purge gland - Rameh
<b>4TS</b>	Cast Iron Bore + end covers Internally Tungsten Carbide coated	Mild steel with Semi-end disc Tungsten Carbide coated discs and shafts	Hardened steel (Hardox)	Air purge gland - Rameh
<b>4NH</b>	Ni Hard body Cast Iron end covers	Mild steel End disc With End disc tipped with Stellite	Mild steel with Stellite tips	Gland - Rameh
<b>5</b>	SP-Aluminium	Stainless steel 316L	Stainless steel 316L	Gland - Teadit
<b>DAIRY</b>	Stainless steel 316	Stainless steel 316L	N.A.	Gland - Lip seal
<b>DAIRY-WD</b>	Stainless steel 316	Stainless steel 316L	N.A.	Gland - Lip seal
<b>DAIRY-EL I</b>	Stainless steel 316	Stainless steel 316L	N.A.	CIP seal

<b>D</b>	Easy detachable
<b>MZC</b>	Easy detachable with supporting rails
<b>HT 250</b>	High temperature - Spherical roller bearing
<b>HT 400</b>	High temperature Cast Iron - Special ball bearing
<b>HT 600</b>	High temperature Stainless steel - Special ball bearing

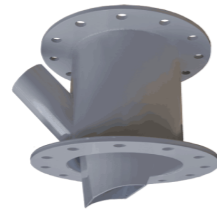
# ACCESSORIES



# ACCESSORIES



**Inlet restrictor**

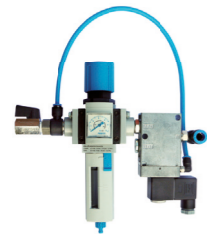


**Vent box**

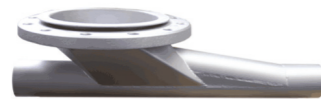


**Rotor Interference Detection**

Special control unit of DMN-Westinghouse design, used to monitor rotor to housing contact. The RID can be installed to minimize damage to the rotary valve and warn of possible contamination of the conveyed product.



**Pressure regulator for all purged seals**



**Dropout box**



## Toolkit

Wornout bearings can cause serious damage to your rotary valves. That also applies to incorrect placement of new bearings. That's why DMN has developed the "Bearing Toolkit". This, allows you to properly replace the bearings of your rotary valve in the right way for a perfectly functioning valve.

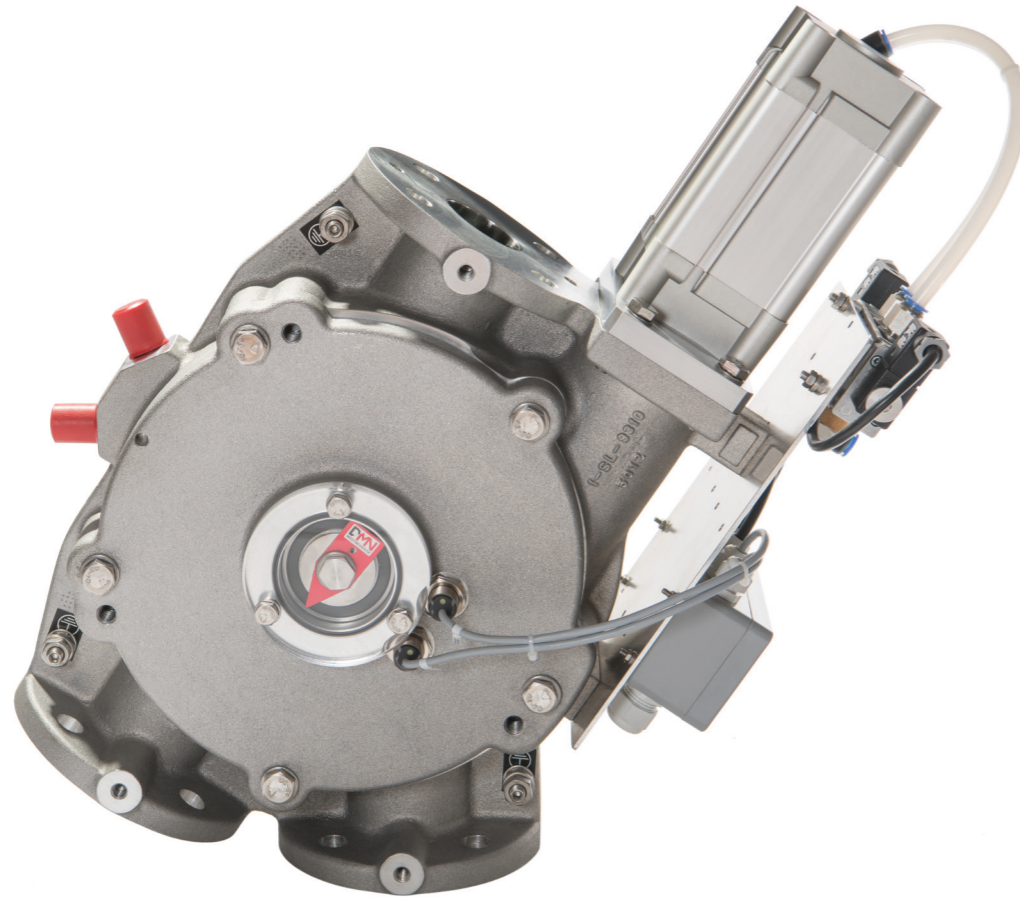
# DIVERTER VALVES

Diverters by DMN-WESTINGHOUSE are available in many types and sizes, suitable for a specific use or a variety of applications. The extensive diverter range comprises of a series of plug diverters (dual pipe, single pipe, gravity) and tube diverters (2-14 ports), some of which are also available in USDA Dairy accepted version. For the mineral industry, the BTD ball type diverter with its rugged design is very suitable for handling abrasive products.

# DUAL PIPE PLUG DIVERTER - PTD-II



DIVERter VALVE - PLUG TYPE



## PTD-II

<b>PRESSURE</b>	Static -0.7 up to +3 bar Inflatable up to +6 bar
<b>PRODUCT TEMPERATURE °C</b>	Standard -20° up to +80° (Optional up to +120°)
<b>AMBIENT TEMPERATURE °C</b>	Standard -20° up to +60° ATEX -20° up to +40°
<b>MATERIAL OF CONSTRUCTION</b>	Aluminium body-plug-cover Stainless steel inserts
<b>FLANGE HOLE PATTERN</b>	DIN PN 10 / ANSI 150 lbs
<b>SEAL</b>	Static: silicone / polyurethane Inflatable: silicone
<b>ATEX 2014/34/EU</b>	1D / 2GD Equipment

<b>SIZES</b>	50	65	80	100	125	150	200
--------------	----	----	----	-----	-----	-----	-----

<b>FLOW DIRECTION</b>	50	65	80	100	125	150	200
-----------------------	----	----	----	-----	-----	-----	-----

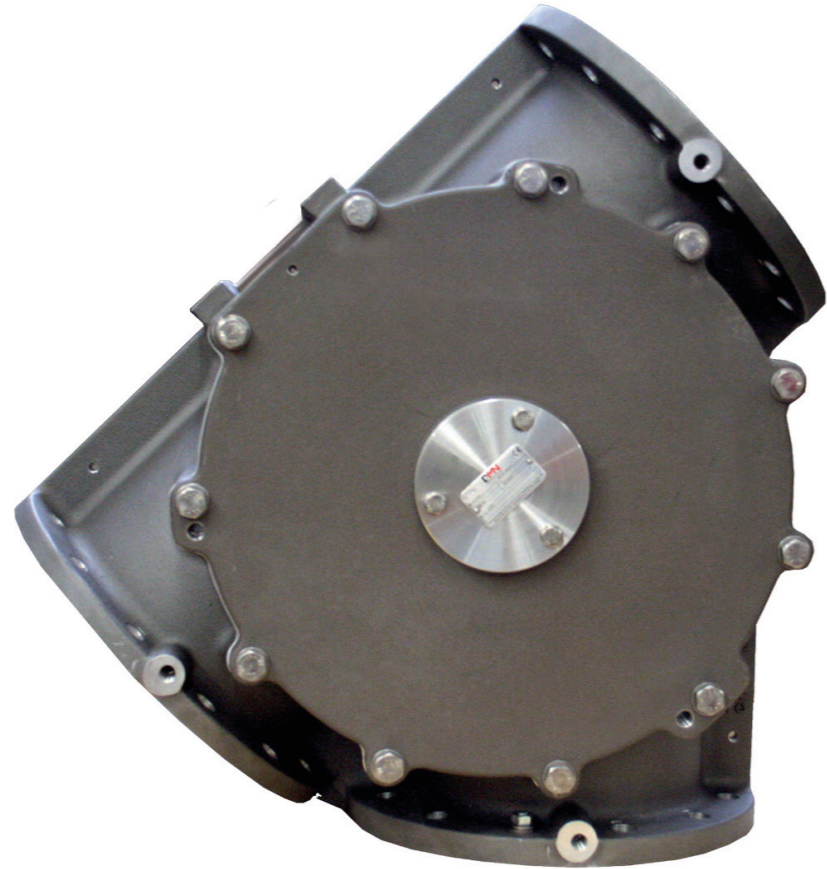
PTD-II

BUILT TO LAST.

# SINGLE PIPE PLUG DIVERTER - SPTD



DIVERTER VALVE - PLUG TYPE



## SPTD

<b>PRESSURE</b>	Static -0.5 up to +3 bar Inflatable up to +6 bar
<b>PRODUCT TEMPERATURE °C</b>	Standard -20° up to +80° (Optional up to +150°)
<b>AMBIENT TEMPERATURE °C</b>	Standard -20° up to +60° ATEX -20° up to +40°
<b>MATERIAL OF CONSTRUCTION</b>	Aluminium body-plug-cover Stainless steel inserts
<b>FLANGE HOLE PATTERN</b>	DN PN 10 / ANSI 150 lbs
<b>SEAL</b>	Static: silicone Inflatable: silicone
<b>ATEX 2014/34/EU</b>	1D / 2GD Equipment
<b>REMARK</b>	Diverging only

										ON REQUEST
<b>SIZES</b>	150	162	200	213	250	267	300	318	350	400

SPTD

BUILT TO LAST.



# SINGLE PIPE PLUG DIVERTER - SPTDS



## SPTDS

<b>PRESSURE</b>	Static -0.5 up to +1 bar
<b>PRODUCT TEMPERATURE °C</b>	Standard -20° up to +80°
<b>AMBIENT TEMPERATURE °C</b>	Standard -20° up to +40°
<b>MATERIAL OF CONSTRUCTION</b>	Aluminium body-plug-cover Option: Hard anodised, stainless steel inserts
<b>FLANGE DRILLED TO</b>	Round: to drawing
<b>SEAL</b>	Static: silicone
<b>ATEX 2014/34/EU</b>	1D / 2GD Equipment
<b>REMARK</b>	Diverging only

<b>SIZES</b>	50	65	80	100	125
--------------	----	----	----	-----	-----

DIVERTER VALVE - PLUG TYPE

SPTDS

BUILT TO LAST.

# 2-PORT TUBE DIVERTER - 2-TDV



DIVERter VALVE - TUBE TYPE



## 2-TDV

<b>PRESSURE</b>	Static up to +1 bar Inflatable -0,8 up to +3 bar
<b>PRODUCT TEMPERATURE °C</b>	-20° up to +100° (+130° for short term only)
<b>AMBIENT TEMPERATURE °C</b>	Standard -20° up to +40°
<b>MATERIAL OF CONSTRUCTION</b>	Cover: Aluminium / Stainless steel 316L Tube: Stainless steel 316L Protection cover: Stainless steel 316L
<b>PIPE</b>	Imperial
<b>SEAL</b>	Static: silicone / Inflatable: EPDM
<b>USDA</b>	Optional
<b>ATEX 2014/34/EU</b>	1D / 2GD Equipment

<b>SIZES</b>	40	50	65	80	100	125	150
--------------	----	----	----	----	-----	-----	-----

2-TDV

BUILT TO LAST.

# 3-PORT TUBE DIVERTER - 3-TDV



DIVERTER VALVE - TUBE TYPE



## 3-TDV

<b>PRESSURE</b>	Inflatable -0,8 up to +3 bar
<b>PRODUCT TEMPERATURE °C</b>	-20° up to +100° (+130° for short term only)
<b>AMBIENT TEMPERATURE °C</b>	Standard -20° up to +40°
<b>MATERIAL OF CONSTRUCTION</b>	Cover: Aluminium / Stainless steel 316L Tube: Stainless steel 316L Protection cover: Stainless steel 316L
<b>PIPE</b>	Imperial
<b>SEAL</b>	Inflatable: EPDM
<b>USDA</b>	Optional
<b>ATEX 2014/34/EU</b>	1D / 3D Equipment

<b>SIZES</b>	40	50	65	80	100	125	150
--------------	----	----	----	----	-----	-----	-----

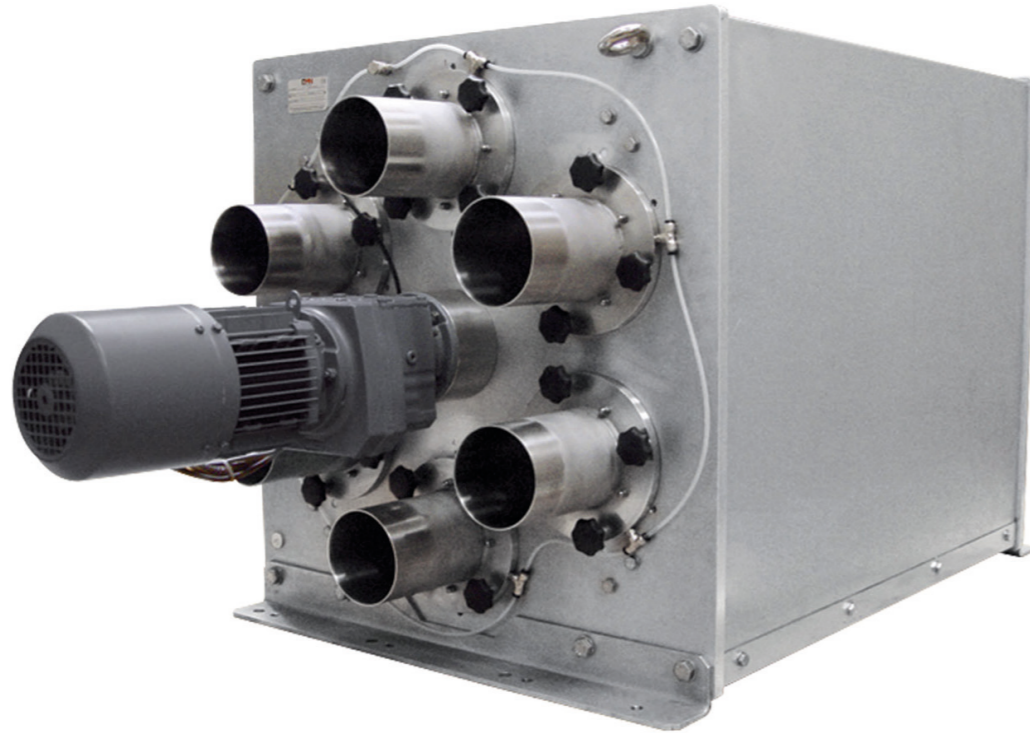
3-TDV

BUILT TO LAST.

# MULTI PORT TUBE DIVERTER - M-TDV



DIVERter VALVE - TUBE TYPE



## M-TDV

<b>PRESSURE</b>	Inflatable -0,8 up to +3 bar
<b>PRODUCT TEMPERATURE °C</b>	-20° up to +100° (+130° for short term only)
<b>AMBIENT TEMPERATURE °C</b>	Standard -20° up to +40°
<b>MATERIAL OF CONSTRUCTION</b>	Cover: Aluminium / Stainless steel 316L Tube: Stainless steel 316L Protection cover: Stainless steel 316L
<b>PIPE</b>	Imperial
<b>SEAL</b>	Inflatable: EPDM
<b>USDA</b>	Optional
<b>ATEX 2014/34/EU</b>	1D / 2GD Equipment
<b>REMARK</b>	Specify mounting position and function on order. Upwards conveying while diverging is not recommended

<b>SIZES</b>	40	50	65	80	100	125	150
<b>NUMBER OF PORTS</b>	4 up to 14	4 up to 13	4 up to 12	4 up to 11	4 up to 10	4 up to 8	4 up to 7

M-TDV

BUILT TO LAST.



# GRAVITY PLUG DIVERTER - GPD



DIVERter VALVE - PLUG TYPE



## GPD

<b>PRESSURE</b>	No pressure	
<b>PRODUCT TEMPERATURE °C</b>	Standard -20° up to +80°	
<b>AMBIENT TEMPERATURE °C</b>	Standard -20° up to +40°	
<b>MATERIAL OF CONSTRUCTION</b>	Body-cover: Cast Iron / Aluminium / Stainless steel 316	Plug: Mild steel / Hardox / Stainless steel 316L
<b>FLANGE HOLE PATTERN</b>	DIN PN 10 / ANSI 150 lbs	
<b>SEAL</b>	No seal	
<b>ATEX 2014/34/EU</b>	1D / 2GD Equipment	

<b>SIZES</b>	150	200	250	300
--------------	-----	-----	-----	-----

GPD

BUILT TO LAST.

# FLAP TYPE DIVERTER - FDV



## FDV

<b>PRESSURE</b>	-0.3 up to +2 bar	
<b>PRODUCT TEMPERATURE °C</b>	Standard -25° up to +80° (Optional up to +150°)	
<b>AMBIENT TEMPERATURE °C</b>	Standard -20° up to +40°	
<b>MATERIAL OF CONSTRUCTION</b>	Body: Cast Iron / Aluminium / Stainless steel 316	Pipe: Mild steel / Stainless steel 304L
<b>FLANGE HOLE PATTERN</b>	DIN PN 10 / ANSI 150 lbs	
<b>PIPE</b>	Metric	
<b>SEAL</b>	Static: Polyurethane / Silicone	
<b>ATEX 2014/34/EU</b>	1D / 2GD Equipment	

<b>SIZES</b>	50	65	80	100	125	150	200	250
--------------	----	----	----	-----	-----	-----	-----	-----

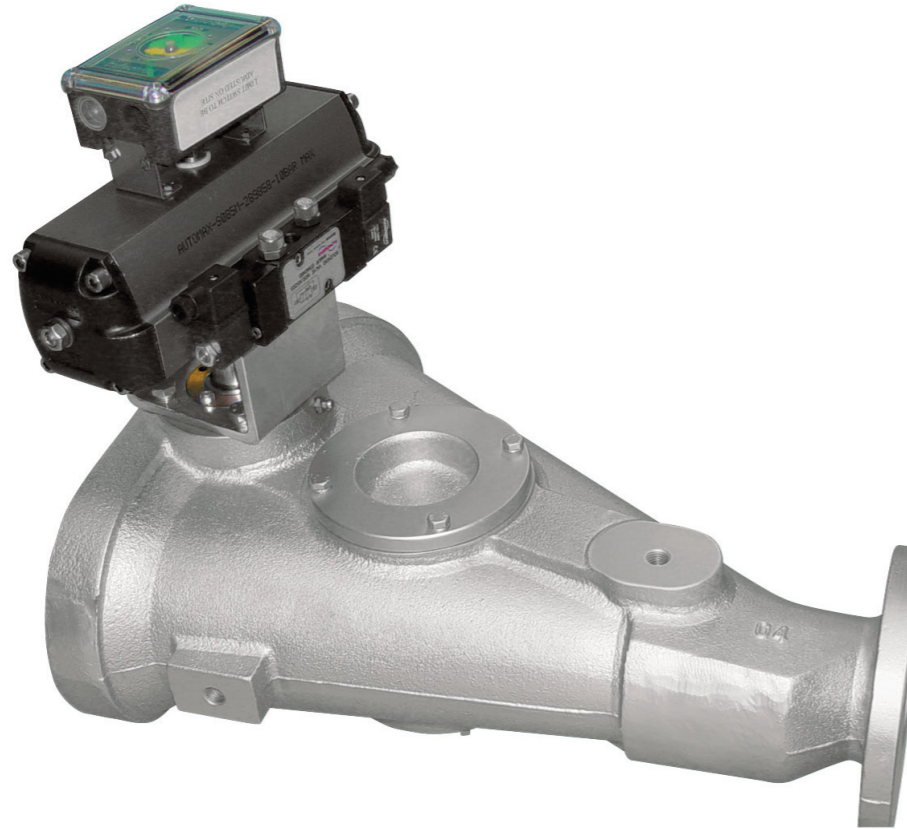
DIVERTER VALVE - FLAP TYPE

FDV

BUILT TO LAST.

# BALL TYPE DIVERTER - BTD

DIVERTER VALVE - BALL TYPE



## BTB

<b>PRESSURE</b>	-0.5 up to +6 bar
<b>PRODUCT TEMPERATURE °C</b>	Standard -25° up to +80° (optional up to +150°)
<b>AMBIENT TEMPERATURE °C</b>	Standard -20° up to +40°
<b>MATERIAL OF CONSTRUCTION</b>	Ductile spheroidal cast iron GS 500/7
<b>FLANGE HOLE PATTERN</b>	DIN PN 10 / ANSI 150 lbs
<b>SEAL</b>	Static: Polyurethane Option: Viton (HT) / Silicone
<b>ATEX 2014/34/EU</b>	1D / 2GD Equipment
<b>REMARK</b>	Horizontal mounting is not recommended

<b>SIZES</b>	65	80	100	125	150	200	250
--------------	----	----	-----	-----	-----	-----	-----

BTB

BUILT TO LAST.

# OTHERS



# OTHERS



## Morris Couplings

Morris couplings provide an economical connecting method of joining conveying pipes together. The range serves the pneumatic conveying industry with a complete line of precision quality coupling and tubing products. They can be used in both pressure and vacuum applications.

- × The original compression coupling
- × Easy to install
- × Substantial and reliable construction
- × Competitive pricing
- × Electrical conductivity guaranteed
- × Available for practically every pipe diameter



## Pressure Relief Valve

- × Reliable
- × Compact form
- × Maintenance free
- × Use of non corrosive materials
- × Easy disassembling and inspection

# INDUSTRIES

## ROTARY VALVES

	AL AXL	AML	USAL	BL BXL BXXL	MLD MALD	SAL	GL	MZC	DL
FOOD	✓	✓	✓	✓	✓	✓	✗	✓	✓
DAIRY	✓	✓	✗	✓	✗	✓	✗	✓	✗
ANIMAL FEED	✓	✓	✓	✓	✓	✓	✗	✓	✓
PHARMA	✓	✓	✓	✓	✓	✓	✗	✓	✓
PLASTICS	✓	✓	✓	✓	✓	✗	✓	✓	✓
PETRO-CHEMICAL	✓	✓	✓	✓	✓	✗	✓	✓	✓
MINERAL	✓	✓	✓	✓	✓	✗	✗	✓	✓
POWER/BIOMASS	✓	✓	✓	✓	✓	✗	✗	✓	✓
RECYCLING	✓	✓	✓	✓	✓	✗	✓	✗	✓

✓ RECOMMENDED    ✓ \ SOMETIME USED    ✗ NOT RECOMMENDED

## DIVERTER VALVES

	PTD-II	SPTD	SPTDS	2-TDV 3-TDV	M-TDV	GPD	FDV	BTD
FOOD	✓	✓	✓	✓	✓	✓	✓	✗
DAIRY	✓	✓	✓	✓	✓	✓	✓	✗
ANIMAL FEED	✓	✓	✓	✓	✓	✓	✓	✓
PHARMA	✓	✓	✓	✓	✓	✓	✗	✗
PLASTICS	✓	✓	✓	✓	✓	✓	✓	✗
PETRO-CHEMICAL	✓	✓	✓	✓	✓	✓	✓	✗
MINERAL	✓	✓	✓	✗	✗	✓	✓	✓
POWER/BIOMASS	✓	✓	✓	✗	✗	✓	✓	✓
RECYCLING	✓	✓	✓	✗	✗	✓	✓	✓

✓ RECOMMENDED    ✓ \ SOMETIME USED    ✗ NOT RECOMMENDED

# DMN-WESTINGHOUSE

## OFFICES WORLDWIDE



Head office

The Netherlands

**DMN-WESTINGHOUSE**

+31 252 361 800

[dmn@dmnwestinghouse.com](mailto:dmn@dmnwestinghouse.com)

[www.dmnwestinghouse.com](http://www.dmnwestinghouse.com)

France

**DMN FRANCE SAS**

+33 1 6949 8570

[contact@dmn-westinghouse.fr](mailto:contact@dmn-westinghouse.fr)

[www.dmnwestinghouse.fr](http://www.dmnwestinghouse.fr)

United Kingdom

**DMN UK LTD**

+44 1249 818 400

[dmn@dmnuk.com](mailto:dmn@dmnuk.com)

[www.dmnwestinghouse.uk](http://www.dmnwestinghouse.uk)

USA

**DMN INCORPORATED**

+1 870 733 9100

[sales.us@dmnwestinghouse.com](mailto:sales.us@dmnwestinghouse.com)

[www.dmn-inc.com](http://www.dmn-inc.com)

Germany

**DMN SCHUTTGUTTECHNIK GMBH**

+49 4181 931 40

[dmn@dmn-sgt.com](mailto:dmn@dmn-sgt.com)

[www.dmnwestinghouse.de](http://www.dmnwestinghouse.de)



# LEGISLATION

In certain parts of the process industry it is very important that product contamination is prevented in the process. When dealing with powders, there is also always a danger of dust explosions. In order to protect public health and to ensure safe working conditions, governments have drawn up an official legislation for systems and components. Moreover, private organisations have created specifications that components should comply with, in order to meet the required branch or system-specific requirements.

**ATEX** | Process systems and components often have to be able to withstand explosions and prevent fires from passing the component. This has resulted in official European legislation, known as the ATEX 2014/34/EU Directive. All DMN rotary valves and diverter valves are also available in ATEX 2014/34/EU compliant versions.

**USDA** | With regards to the USDA (United States Department of Agriculture), our AL, AML and BL rotary valves are tested and certified USDA Dairy Accepted. This also applies to our 2- and 3-TDV tube diverters, M-TDV multiport diverter and GPD gravity plug diverter. This means that these components meet the high standards that apply in the US food, dairy, pet food and other related industries.

**NFPA 69** | The National Fire Protection Association (NFPA) provides regulations to protect your manufacturing plant from fires, deflagrations, explosions, and other safety risks. Our NFPA 69 compliant rotary valves have particular design and construction elements. Under NFPA 69 Section 12.2.3.2 for Rotary Valve Design Criteria, the following

models are offered with NFPA 69 compliance: AL/AXL, AML, BL/BXL/BXXL, and USAL.

**EC 1935/2004 FDA** | The European regulation EC 1935/2004 applies to all food contact materials. With regard to the use of these materials as parts in our components, we can supply a declaration of compliance and appropriate documentation that demonstrate compliance to the EC 1935/2004 regulation and its supporting regulations EC 10/2011 and EC 2023/2006. The materials used also conform to FDA regulations with regard to food contact.

**EAC** | EAC is a certification mark which indicates that the products conform to all technical regulations of the Eurasian Customs Union and is a guarantee that the products marked with it comply with health, safety, and environmental protection standards. All DMN-WESTINGHOUSE rotary valves and diverter valves comply with the corresponding technical requirements of the EAEU (Eurasian Economic Union) and have passed all conformity assessment procedures.

**BUILT TO LAST.**

BUILT TO LAST.

[DMNWESTINGHOUSE.COM](https://www.dmnwestinghouse.com)